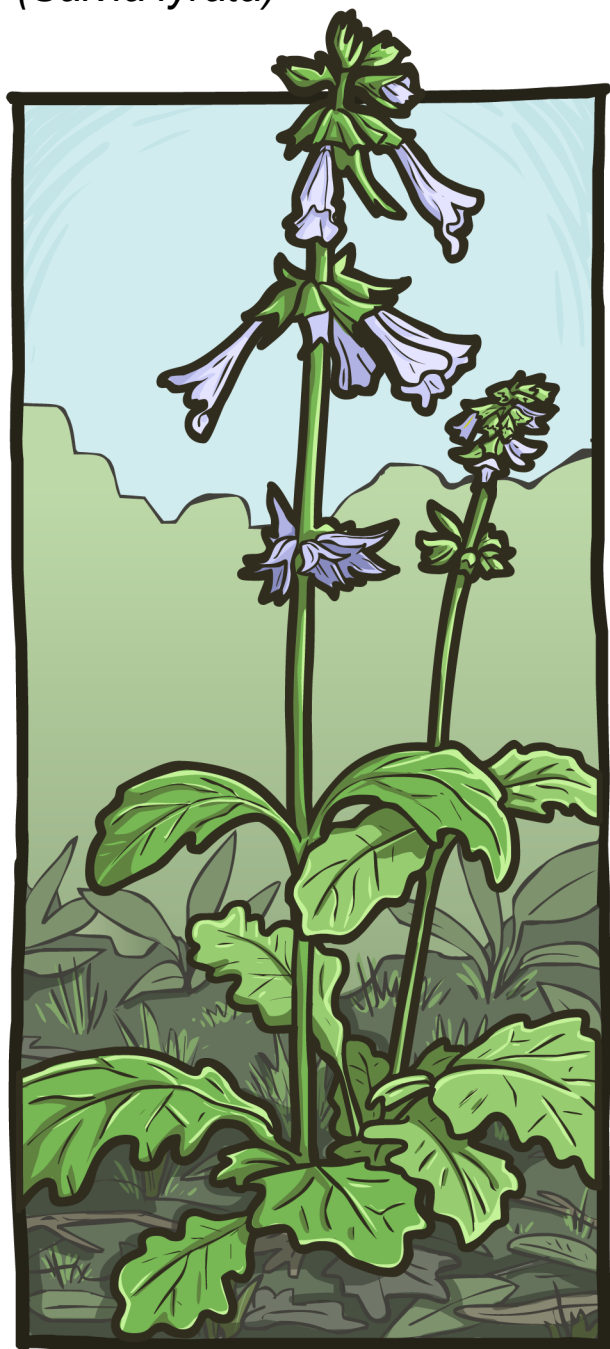


Lyre-Leaf Sage

(*Salvia lyrata*)



Lyre Leaf Sage

Instant ID

- This member of the mint family grows up to two feet with light purple flowers
- Stems are square and hairy
- Symmetrical bumpy leaves with jagged edges are clustered on the ground
- Leaves sometimes have purple coloration in their centers
- Flowers are trumpet shaped and about one inch long with the lower portion extending past the upper portion

Native Niches

- Grows from Connecticut to Texas, south throughout Florida and north to Ohio
- Found mostly in open woods, roadsides and fields with sandy soil

Lyre-Leaf Sage

(*Salvia lyrata*)



Lyre Leaf Sage

Plant Particulars

- Lower edge of flower is shaped like a landing pad to position bees for pollination
- Name comes from the lyre (harp-like instrument) popular in Ancient Greece
- Butterflies and hummingbirds drink the nectar
- Plant dies at the end of a growing season, but frequently reseeds itself
- One of eight species of sage native to Florida
- American Indians used the root to make salves and the whole plant to make a medicinal tea

Population Protection

- Grows well throughout most of its range
- Makes a great landscaping plant

